



Hard Chess Puzzle # 0115

By

G Bud Games
<https://gbud.in>

January 24, 2022

Contents

Hard Chess puzzle # 0115 - Mate in 3 moves	3
Hard chess puzzle 0115	3
Solution to hard chess puzzle 0115	4
Solution 1	4
Right moves for the solution to the hard chess puzzle 0115	7
Explanation for the moves	7
Categories of hard chess puzzle 0115	8
hard chess puzzle 0115 chart	9
How to view the solution to hard chess puzzle 0115	11
How to get help for moves in the hard chess puzzle 0115	12
Play chess for free	13

List of Figures

1	Solve this hard chess puzzle 0115. Mate in 3 moves @ https://gbud.in/gwlzsd3	3
2	Solve this hard chess puzzle online with solution @ https://gbud.in/gwlzsd3	3
3	Initial board position of hard chess puzzle 0115	4
4	Re7+	5
5	Kc8	5
6	Bg4+	6
7	Kd8	6
8	Rxb8#	7
9	hard chess puzzle 115 chart 1	9
10	hard chess puzzle 115 chart 2	10
11	hard chess puzzle 115 chart 3	10
12	hard chess puzzle 115 chart 4	11
13	Click the solution button to view solutions @ https://gbud.in/gwlzsd3	11
14	Click the help button to get help on next move @ https://gbud.in/gwlzsd3	12
15	Solve more hard puzzles @ https://gbud.in/chshdpz	12
16	Solve other puzzles @ https://gbud.in/chsgppz	12
17	Play chess online for free. Solve puzzles and play with friends	13
18	Solve this puzzle online by scanning this QR code or go to the link below	14

Hard Chess puzzle # 0115 - Mate in 3 moves

Solve this hard chess puzzle and improve your chess games through improvement of your chess strategies and chess tactics. This hard puzzle is a subset of [kids games](#).

Puzzle No : 0115

Difficulty level : hard

Description : Mate in 3 moves

Next Move : White

Player level : Advanced

Short URL for puzzle : <https://gbud.in/gwlzsd3>

Hard chess puzzle 0115

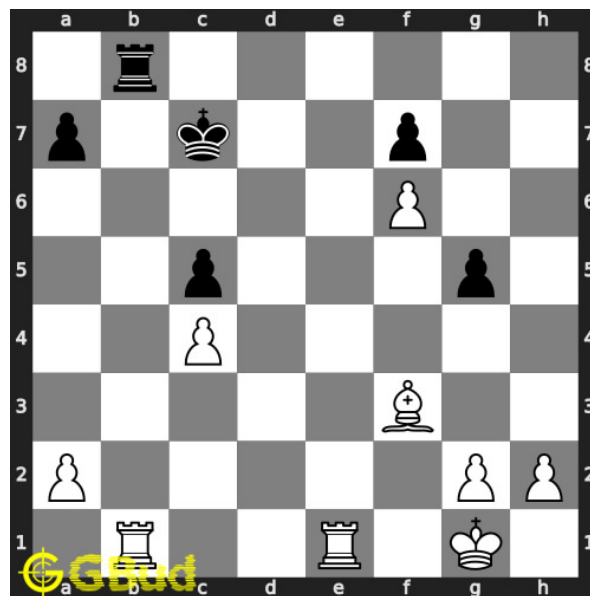


Figure 1: Solve this hard chess puzzle 0115. Mate in 3 moves @ <https://gbud.in/gwlzsd3>



Figure 2: Solve this hard chess puzzle online with solution @ <https://gbud.in/gwlzsd3>

Dont forget to check out [chess puzzles](#), [easy chess puzzles](#), [medium chess puzzles](#), [hard chess puzzles](#) and [chess puzzles collections](#) .

Solution to hard chess puzzle 0115

At this puzzle, next [move](#) is by [White](#). The objective of the puzzle is to mate in 3 moves.

See the interactive solution at the [puzzle page](#)

Solution 1

Initial board position This is the initial board position of hard chess puzzle 0115.

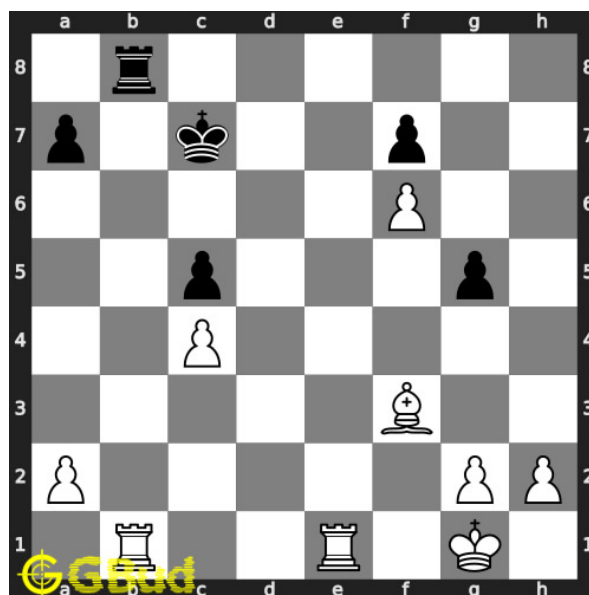


Figure 3: Initial board position of hard chess puzzle 0115

Move 1 Move by white

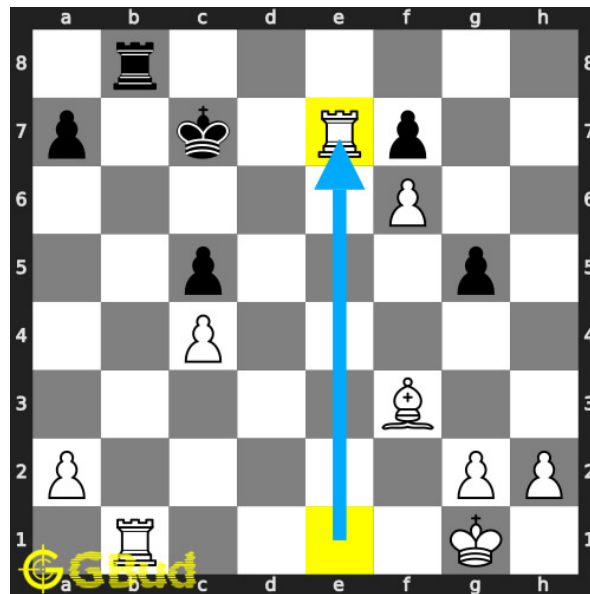


Figure 4: Re7+

your **rook moves** to **e7** and gives **check** to opponent. this is to drive the opponent's **king** to **move** to eighth **rank**.

Move 2 Move by black

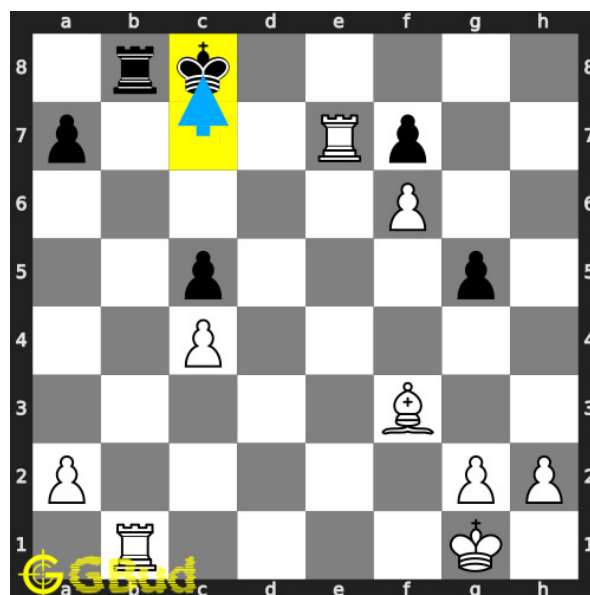


Figure 5: Kc8

opponent's **king moves** closer to their **rook** to **c8** to give support to it. if it comes to **d6**, you can end the game by moving your another **rook** to **d1**.

Move 3 Move by white

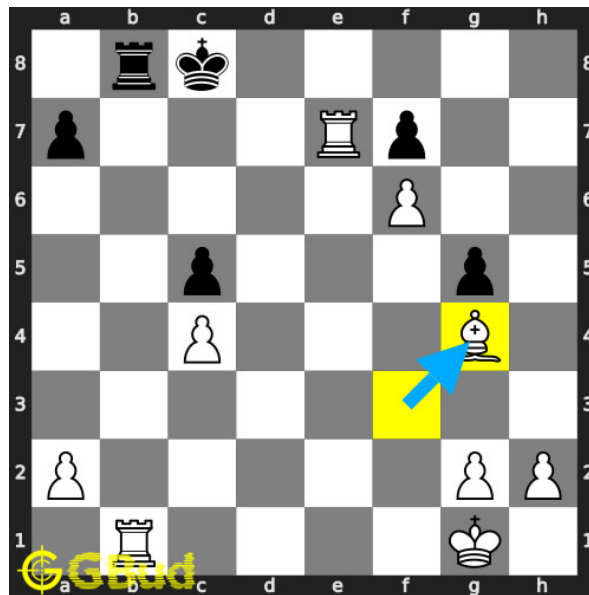


Figure 6: Bg4+

your **bishop** moves to **g4** and gives **check** to opponent. this is to force the **king** to **move** away from their **rook**.

Move 4 Move by black

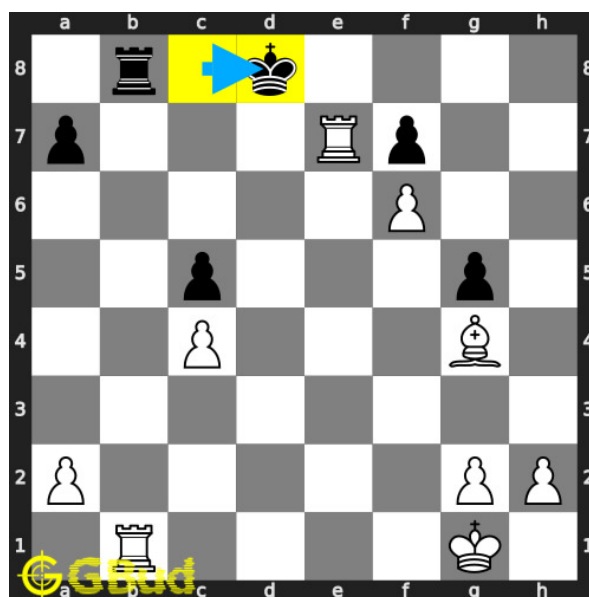


Figure 7: Kd8

this is a zugzwang **move** as the opponent's **king** is forced to respond.

Move 5 Move by white

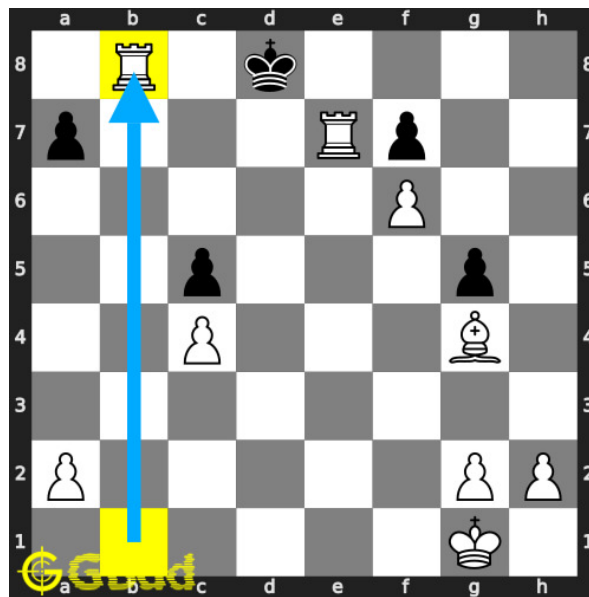


Figure 8: Rxb8#

your **rook captures** opponent's **rook** and **checkmate**. this is called ladder **mate** or lawn mover **mate**. this is how you can **mate** in 3 **moves**.

Right moves for the solution to the hard chess puzzle 0115

Based on the objective of the puzzle, you have to make the right moves. Following are the right moves

1. Re7+, Bg4+, Rxb8#

Explanation for the moves

1. Re7+ - Your rook moves to e7 and gives check to opponent. This is to drive the opponent's king to move to eighth rank.
2. Kc8 - Opponent's king moves closer to their rook to c8 to give support to it. If it comes to d6, you can end the game by moving your another rook to d1.
3. Bg4+ - Your bishop moves to g4 and gives check to opponent. This is to force the king to move away from their rook.
4. Kd8 - This is a zugzwang move as the opponent's king is forced to respond.
5. Rxb8# - Your rook captures opponent's rook and checkmate. This is called ladder mate or lawn mover mate. This is how you can mate in 3 moves.

6. For right move - You utilised the rooks and bishop effectively. They were good moves
7. For wrong move - You could have had a ladder mate. You missed it. Don't give up

Categories of hard chess puzzle 0115

This hard chess puzzle falls in these categories.

1. [Hard chess puzzles](#)
2. [Mate in 3 puzzles in chess](#)
3. [Endgame puzzles in chess](#)
4. [Strategy puzzles in chess](#)
5. [Mate pattern puzzles in chess](#)
6. [Zugzwang puzzles in chess](#)
7. [Rook puzzles in chess](#)
8. [Bishop puzzles in chess](#)

hard chess puzzle 0115 chart



Figure 9: hard chess puzzle 115 chart 1



Figure 10: hard chess puzzle 115 chart 2



Figure 11: hard chess puzzle 115 chart 3

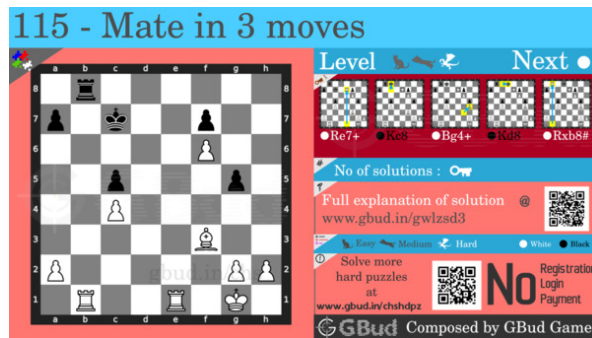


Figure 12: hard chess puzzle 115 chart 4

How to view the solution to hard chess puzzle 0115

To view the [solution to this puzzle](#), follow the steps given below

1. Go to the [puzzle page](#)
2. Click the solution button (Key as shown [below](#)) to view the solution



Figure 13: Click the solution button to view solutions @ <https://gbud.in/gwlsd3>

How to get help for moves in the hard chess puzzle 0115

To get help or the possible next moves in the puzzle, , follow the steps given below

1. Go to the [puzzle page](#)
2. Click the help button (exclamation mark as shown [below](#)) to get help or suggestion on next possible [move](#)



Figure 14: Click the help button to get help on next move @ <https://gbud.in/gwlzsd3>



Figure 15: Solve more hard puzzles @ <https://gbud.in/chshdpz>



Figure 16: Solve other puzzles @ <https://gbud.in/chsgppz>

Play chess for free

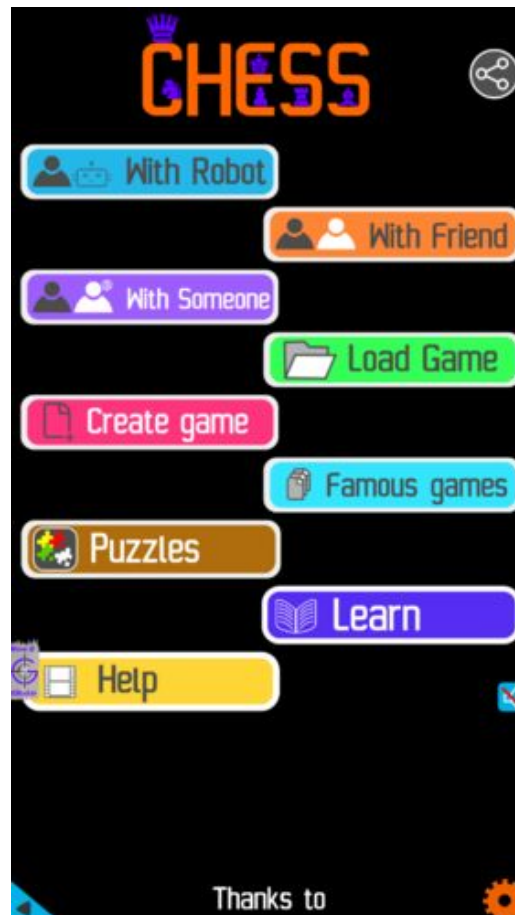


Figure 17: Play chess online for free. Solve puzzles and play with friends

Play chess for free at <https://gbud.in/chs>

We present you a platform to play chess online with friends for free. No need to install any app. You can play chess for free without registration or login.

Simple. You can do several chess related activities.

1. [solve chess puzzles](#)
2. [learn about chess](#)
3. [play chess with computer](#)
4. [play chess with friend](#)
5. [create your own chess games](#)

6. [fen viewer](#)
7. [fen editor](#)
8. [fen generator](#)
9. [pgn viewer](#)
10. [chess board editor](#)
11. [view famous chess games.](#)



Figure 18: Solve this puzzle online by scanning this QR code or go to the link below

<https://gbud.in/gwlzsd3>

Read the latest article on Hard Chess puzzle # 0115 - Mate in 3 moves by scanning this QR code or click the link

Previous article : « [Hard Chess puzzle # 0114 - Mate in 4 moves](#)

Next article : [Hard chess puzzles](#) »

[Back to top](#)

[Contact Us](#)